

Thank you for purchasing a National Cycle product. Read these instructions carefully and thoroughly before beginning work. Dealers, if installing this windshield for a customer, please give them this manual upon completion. It contains information needed to properly maintain and use this product.

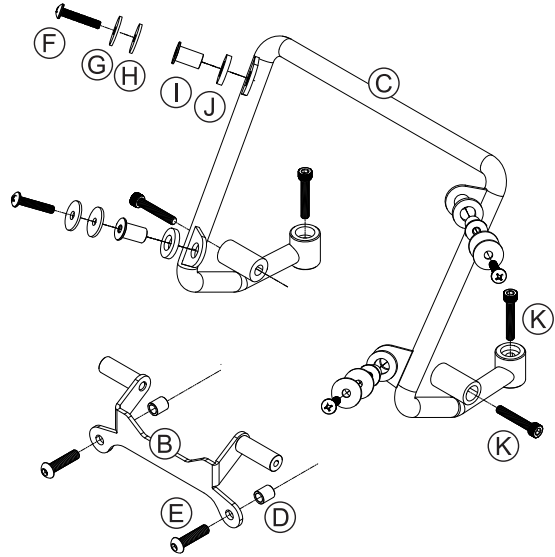
Description:	VStream+® Windscreen	Model:	2023-Current Suzuki® GSX-8S
Part Number:	N20240/N20241/N20242	Installation Time:	60 min. Difficulty Level: Moderate

PACKAGE CONTENTS

ITEM	PART NO.	DESCRIPTION	QTY.
A		VStream+ Windscreen	1
B	34-351087-000	Bracket Brace	1
C	34-351086-000	Windscreen Bracket Mount,	1

BAG1452

D	34-352165-000	Spacer, Stainless, .238Dx343ODx.384	2
E	51-516328-000	Buttonhead Cap Screw, Hex Socket, Stainless, M6x25, Black	2
F	55-581015-000	Machine Screw, Phillips, Black, 10-32x1	4
G	49-490110-000	Washer, Flat, 10x3/4x.06	4
H	75-762034-000	Washer, EPDM	4
I	42-471200-000	Wellnut	4
J	75-762038-000	Washer, Neoprene, .75Ox.125	4
K	51-515230-000	Cap Screw, Hex Socket, Stainless, Black, M5 .8x30	4



TOOLS REQUIRED

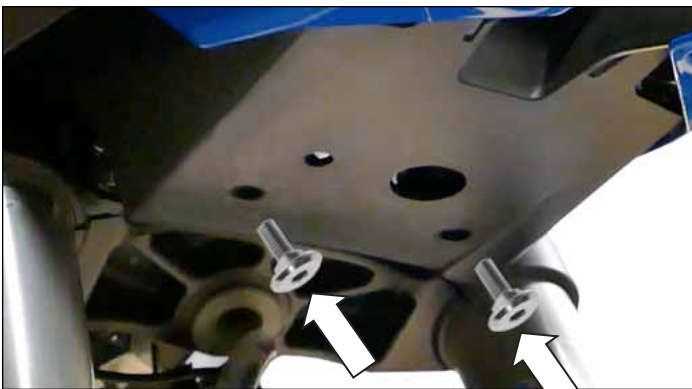
4mm Allen Key Small Flathead Screwdriver
5mm Allen Key #2 Phillips Screwdriver



ATTENTION: Special notes and cautionary measures which can prevent damage to the accessory or vehicle.



NOTE: Tips for facilitation of operation, control and adjustment, as well as maintenance work.



Step 01

PREPARATION

- Place motorcycle securely on its sidestand.
- Place a blanket over the motorcycle's front fender to keep it from being scratched,
- Check all the Windscreen Mounting Kit's parts and make sure you have everything at hand and sorted out.
- Make sure you have the required tools available.

DISASSEMBLY

- Step 01**
Remove two M5 shoulder screws underneath the headlight cowl using a 4mm Allen key. Save these for later reinstallation.



Step 02

DISASSEMBLY; CONT'D.

Step 02

Remove the upper two screws from the headlight cowl next to turn signals using a 4mm Allen key. These screws will not be reused.

Step 03

Remove two push fasteners on the front of the cowl below the dash panel. Use a small flathead screwdriver to carefully remove these. Save these for later reinstallation.

Step 04

Remove push-style side rivets by pushing in on the center using a small flathead screwdriver. These will not be reused.

Step 05

Inside the cowl by the steering column, unplug the two connectors for the daytime running lights. Separate the left/right pair of white male/white female connectors by pressing the small release tabs on the male connectors with your thumbnail or a small flathead screwdriver.

Step 06

Carefully pull the headlight cowl forward and gently set it on the front fender.

Step 07

Remove the two large silver Allen screws above the headlight using a 5mm Allen key. These will not be reused.



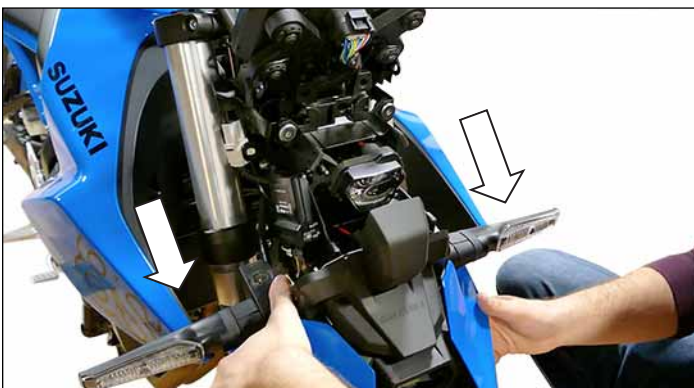
Step 03



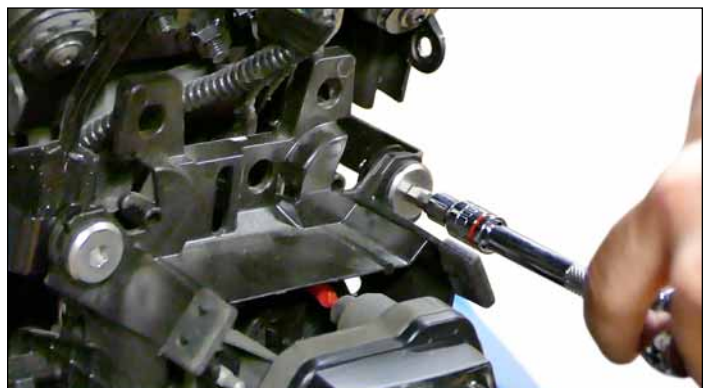
Step 04



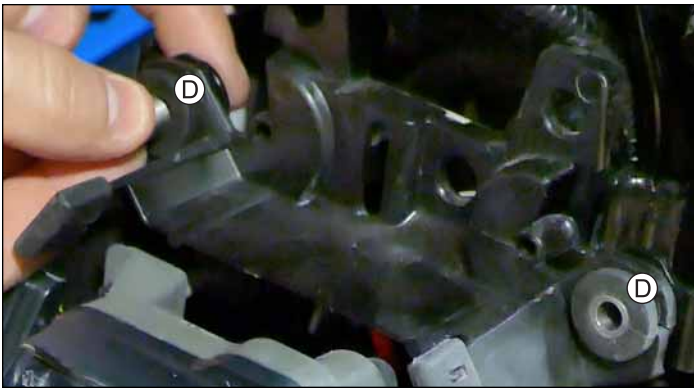
Step 05



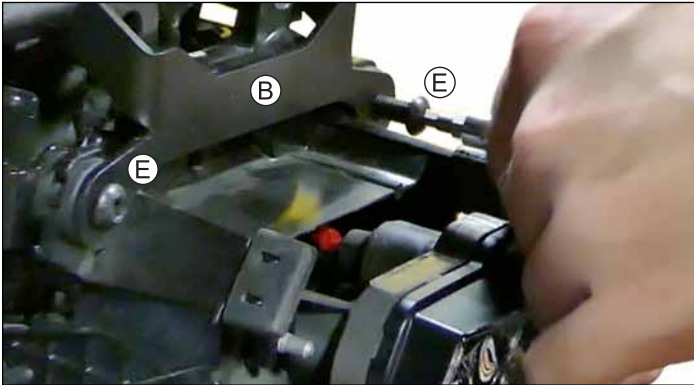
Step 06



Step 07



Step 08



Step 09



Step 10



Step 12

INSTALLATION

Step 08

Insert Spacers (D) into rubber grommets on left and right front sides of the headlight bracket.

Step 09

Place two Cap Screws (E) into the lower tabs of Bracket Brace (B) and into the Spacers (D) and rubber grommets. Use a 4mm Allen key to tighten the assembly. These should be torqued to 7.5 ft/lb.

Step 10

Slide the headlight cowl back into place.

Step 11

Reinsert the two front push fasteners at the top front and then the two lower M5 shoulder screws (removed in Step 01) underneath the headlight cowl. Tighten the screws securely.

Step 12

Reconnect white daytime running light electrical plugs and ensure they work before continuing to the next step.

Step 13

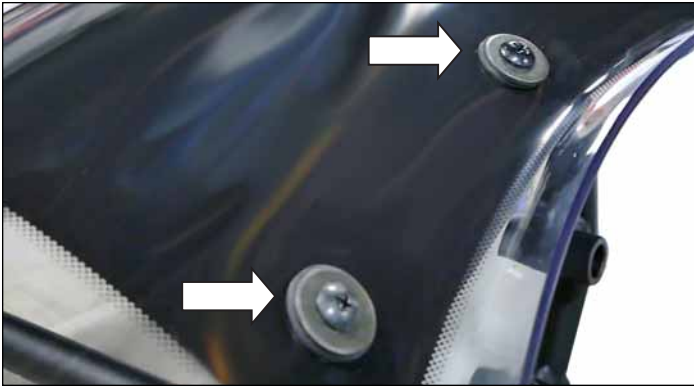
Take the four Wellnuts (I) provided and insert them into the four Rubber Washers (J) and insert these into the Windscreen Bracket Mount (C).



Step 11



Step 13



Step 14



Step 15



Step 16

INSTALLATION; CONT'D.

Step 14

Take the four Phillips Screws (F), Flat Washers (G), and EPDM Washers (H) insert through the Windscreen and into the Windscreen Bracket Mount's Wellnuts. Tighten securely with a Philips head screwdriver. Do not overtighten or Wellnuts will be damaged.

Step 15

Slip the Windscreen/Bracket Mount assembly over top of headlight cowl.

Step 16

Loosely install Cap Screws (K) into the side headlight bracket mounts.

Step 17

Then install two Cap Screws (K) into the rear mounts of the Bracket and tighten firmly. Finally, go back and securely tighten the two Cap Screws (K) securing the Windscreen/Bracket to the side headlight bracket mounts.

Check all fasteners for tightness and ensure that the fitment is complete.

Ride safe and enjoy the performance benefits of your new VStream+® Windscreen!



Step 17





CLEANING AND MAINTENANCE

To clean the screen, wash with a clean soft cloth and plenty of warm water and, if necessary, a non-abrasive soap such as dishwashing liquid. Flannel or soft chamois make good cleaning cloths. Paint, glue residue or grease removal: Moisten cotton wad with naphtha or turpentine followed by a wash as above.

National Cycle Shield Wash™ (N1401-01) makes a good daily cleaner and comes with a handy travel-size bottle. Shield Wash is safe for all windshields and helmet visors

Do not clean polycarbonate in hot sun or high temperatures. Do not clean the screen with household glass cleaners. Do not allow brake fluid, alcohol, or strong solvents to contact the screen.

RAIN REPELLENT

Do not use rain protective products made for glass. We recommend National Cycle's RainZip® (N1410-01) to keep your wind-screen clear in rainy weather.



Register Your Windshield Online at www.nationalcycle.com

National Cycle 3-Year Limited Warranty

National Cycle hereby warrants to the original registered owner of a National Cycle polycarbonate windshield for a period of three years from the date of purchase against breakage. This limited warranty is expressly limited to the replacement of the polycarbonate windscreen. This limited warranty does not include scratches, coating failure, cosmetic wear and tear, replacement of hardware, or any consequential damages or expenses including labor cost of installation, removal and/or replacement, inconvenience, inbound freight expenses or damage to any other component of the motorcycle or any other accessories. Certain chemicals, generally known as acidic hydrocarbons, are known to cause polycarbonate damage and will not be covered under this limited warranty. Please refer to the cleaning instructions supplied with all National Cycle windshields.

Visit www.nationalcycle.com for further details, or call 708-343-0400 or e-mail info@nationalcycle.com.

WARNING

Never ride your motorcycle with loose accessory mounting hardware. Check the hardware for tightness regularly.

Today's motorcycles are built with enough frame rigidity to withstand the moderate loads imposed on them by the foreseeable addition of an accessory(ies). If an accessory(ies) adversely affects your motorcycle's stability, immediately remove the accessory(ies). Do not ride a motorcycle that exhibits unsafe handling traits.

Have experienced service personnel correct any problem before riding with the accessory(ies) installed. For further questions concerning handling problems associated with an accessory(ies), contact your dealer, motorcycle manufacturer, or accessory manufacturer.

Sunlight reflected off the inside curvature of the windscreen can, at certain times of day, cause extreme heat buildup on the motorcycle's instruments and possibly even melt them. Exercise care in parking to avoid this. Park your motorcycle facing the sun or place an opaque object over this area.